

HIMALAYA – MERCAN

SIZES

S (M, L, XL, 2XL, 3XL)

Directions are for women's size small. Changes for larger sizes are in parentheses. Shown in size small.

FINISHED MEASUREMENTS

Bust: 84 (93, 102, 113, 124, 133)cm

Length: 58.5 (60, 61.5, 63.5, 65, 67.5)cm

SKILL LEVEL

Intermediate

MATERIALS

- **MC:** 3 (3, 3, 4, 4, 5) skeins of Mercan by Himalaya, (260m per 100g skein; 100% Acrylic) in color 26
- **CC:** 1 skein of Mercan by Himalaya, (260m per 100g skein; 100% Acrylic) in color 24
- 1 pair of 3mm straight needles
- 1 pair of 3.5mm straight needles
- 3mm circular needle, 60cm long
- Stitch holders
- Tapestry needle

TENSION

22 sts and 29 rows = 10cm over St st with 3.5mm needles.

TO SAVE TIME, CHECK YOUR TENSION.

BORDER PATTERN

Work 16 rows of Charts A, B or C and 6 rows of Charts D or E.

Charts A & C: Multiple of 4 sts + 2 selv sts (before decreasing).

Chart B: Multiple of 4 sts + 2 sts + 2 selv sts (before decreasing).

Chart D: Multiple of 4 sts + 2 selv sts.

Chart E: Multiple of 4 sts + 2 sts + 2 selv sts.

NOTE

Selvedge stitches are included in the stitch count (1 st each end of row). Work selvedge sts in St st (recommended).

BACK

Using smaller straight needles and CC, cast on 94 (104, 114, 126, 138, 148) sts. Work in k1, p1 rib for 3.5cm, beg and end with WS row. Change to larger needles and cont in St st. Work even for 4 rows, end with WS row.

Shape Waist

Next (dec) row (RS): Work Row 1 of Chart A (B, A, A, A, B) for Border Pattern using CC and MC - 2 sts decreased (decs are included in chart).

When all sts of chart have been done, cont with MC only and make 3 more dec rows every 6th row - 82 (92, 102, 114, 126, 136) sts. Cont even until piece measures 23 (23, 24, 24.5, 24.5, 25)cm from beg, end with WS row.

Next (inc) row (RS): Selv st, KFB, work to last 3 sts, KFB, k1, selv st.

Rep inc row every 8th row 5 times more - 94 (104, 114, 126, 138, 148) sts. Cont even until piece measures 39.5 (39.5, 40.5, 41, 41, 42)cm from beg, end with WS row.

Shape Armholes

Cast off 3 (4, 5, 6, 7, 8) sts at beg of next 2 rows, 2 sts at beg of next 4 (4, 4, 4, 6, 6) rows and 1 st at beg of next 8 (10, 12, 18, 20, 26) rows - 72 (78, 84, 88, 92, 94) sts. Cont even until armholes measure 16.5 (18, 18.5, 20, 21.5, 23)cm, end with WS row.

Shape Neck and Shoulders

Next row (RS): Knit until there are 19 (22, 24, 26, 27, 28) sts on right hand needle, place center 34 (34, 36, 36, 38, 38) sts on holder, attach another ball of yarn and knit to end of row.

Working both sides at once, cast off at each neck edge 3 sts once and 2 sts 3 times. **AT SAME TIME**, when armholes measure 18.5 (20, 20.5, 22, 23.5, 25)cm, ending with WS row, cast off 5 (6, 7, 8, 9, 9) sts at beg of next 2 rows and 5 (7, 8, 9, 9, 10) sts at beg of next 2 rows for shoulders.

FRONT

Work as for back following Chart C (B, C, C, C, B) for Border Pattern. When armholes measure 5.5 (6.5, 7, 7.5, 9, 10)cm, ending with WS row, cont as follows:

Shape Neck and Shoulders

Next row (RS): Knit to center 16 (16, 18, 18, 20, 20) sts, place center 16, (16, 18, 18, 20, 20) sts on holder attach another ball of yarn and knit to end of row.

Working both sides at once, cast off at each neck edge 4 sts once, 3 sts once, 2 sts 3 times and 1 st 5 times - 10 (13, 15, 17, 18, 19) sts each side. Continue even until armholes measure 18.5 (20, 20.5, 22, 23.5, 25)cm, end with WS row. Shape shoulders same as back.

SLEEVE

Using smaller straight needles and CC, cast on 66 (72, 78, 84, 90, 96) sts. Work in k1, p1 rib for 3.5cm, beg and end with WS row. Change to larger needles and cont in St st. Work even for 4 rows, end with WS row.

Next row (RS): Work Row 1 of Chart D (E, D, E, D, E) for Border Pattern using CC and MC.

When all rows of Border Pattern have been done, cont with MC only and make 2 more rows even.

Shape Cap

Cast off 3 (4, 5, 6, 7, 8) sts at beg of next 2 rows, 2 sts at beg of next 4 (4, 4, 4, 6, 6) rows, 1 st at beg of next 8, (10, 10, 10, 8, 8) rows, then 1 st at beg of every 4th row 3 (3, 4, 5, 6, 7) times each side, 1 st at beg of next 8 (8, 8, 8, 8, 10) rows, 2 sts at beg of next 6 rows and 3 sts at beg of next 2 rows. Cast off remaining 12 (14, 16, 18, 18, 18) sts.

FINISHING

Block pieces to measurements. Sew shoulder seams.

Neckband

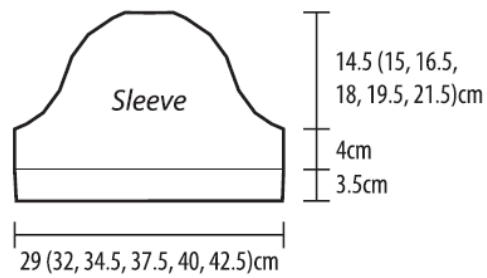
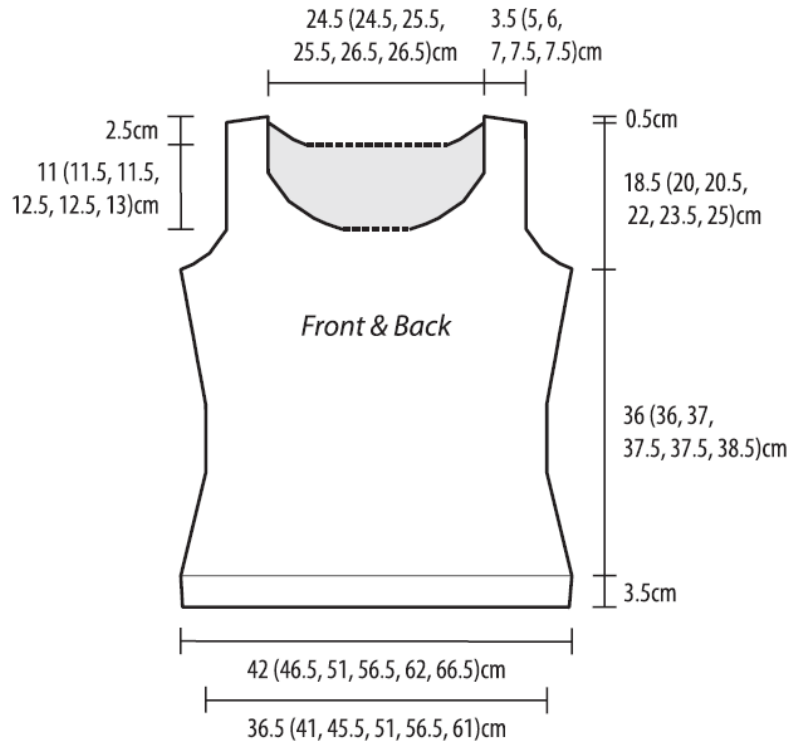
With RS facing, using circular needle and MC, knit 34 (34, 36, 36, 38, 38) sts from back neck holder, pick up and knit 13 sts along left back neck edge, 38 (40, 40, 41, 41, 43) sts along left front neck edge, knit 16 (16, 18, 20, 20) sts from front holder, pick up and knit 38 (40, 40, 41, 41, 43) sts along right front neck edge and 13 sts along right back neck edge - 152 (156, 160, 162, 166, 170) sts. Work in k1, p1 rib for 5 rounds, change to CC and make one more round. Cast off all sts as they appear in rib on next round.

Set in sleeves, sew sides and sleeve seams. Weave in loose ends.

ABBREVIATIONS

beg	begin/beginning
CC	contrast color
cont	continue
dec(s)	decrease(s)
inc(s)	increase(s)
k	knit
k2tog	knit 2 stitches together
KFB	knit 1 front & back: knit stitch, leaving stitch on left needle, knit into back loop of this stitch
MC	main color
p	purl
rep	repeat
RS	right side
selv st(s)	selvedge stitch(es)
ssk	slip 1 knitwise, slip 1 knitwise, knit 2 slipped sts through back loop
st(s)	stitch(es)
St st	stocking stitch
WS	wrong side
()	alternate measurements and/or directions
*	repeat instructions following the single asterisk as directed

HIMALAYA - MERCAN



Note: Measurements don't include selvedge sts

Chart A (back of sizes S, L, XL, 2XL)

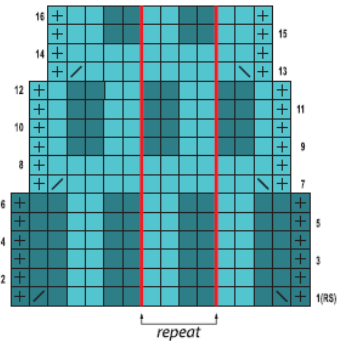


Chart B (back & front of sizes M & 3XL)

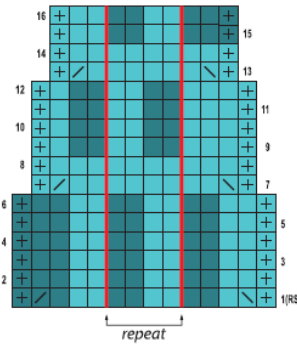


Chart C (front of sizes S, L, XL, 2XL)

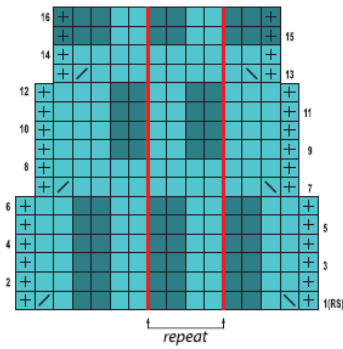


Chart D (sleeve of sizes S, L & 2XL)

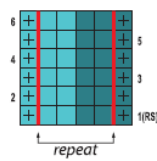
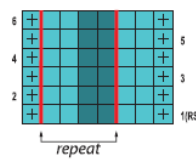


Chart E (sleeve of sizes M, XL & 3XL)



Stitch Key

- MC (k on RS, p on WS)
- CC (k on RS, p on WS)
- / k2tog
- \ ssk
- + selvedge stitch